

State of Wyoming Corner Record

(In compliance with the *CORNER PERPETUATION AND FILING ACT*, Wyoming Statutes, 1997 Section 33-29-140 et. seq., and the Rules and Regulations of the Board of Professional Engineers and Professional Land Surveyors)

Reverse side of this form may be used if more space is needed.

Record of original survey and citation of source of historical information (if corner is lost or obliterated). Description of corner monumentation evidence found and/or monument and accessories established to perpetuate the location of this corner. Sketch of relative location of monument, accessories, and reference points with course and distance to adjacent corner(s) (if determined in this survey). Method and rationale for reestablishment of lost or obliterated corner.

N $\frac{1}{4}$ CORNER, SECTION 8, T.12N., R.66W., 6TH P.M., LARAMIE COUNTY, WYOMING

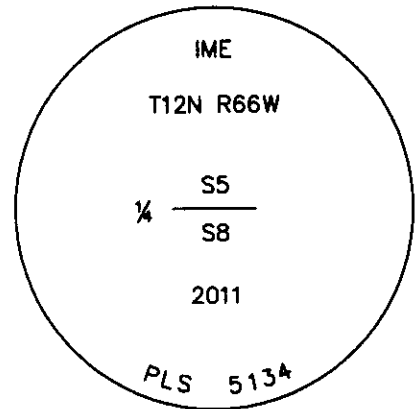
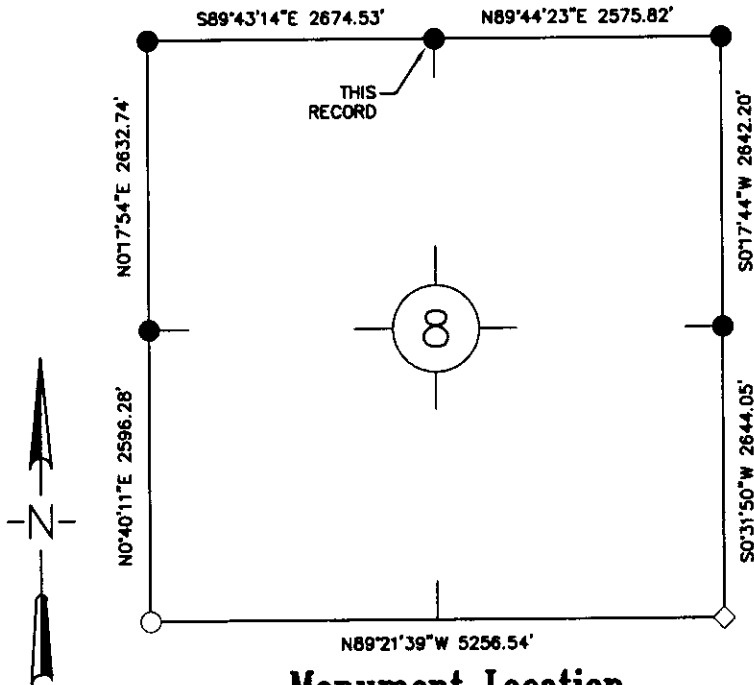
FOUND: 5/8" REBAR WITH PINK FLAGGING
SOUTH SIDE OF LOOSE STONE MARKED $\frac{1}{4}$ ON
NORTH SIDE.

SET: 2 $\frac{1}{2}$ " ALUMINUM CAP ON REBAR. BURIED STONE ON
SOUTH SIDE OF SET MONUMENT.

Note: Bearings and distances are relative to NAD
1983 Wyoming State Plane East Zone.
Distances shown are ground.

LEGEND

- ⊙ FOUND BRASS CAP
- FOUND ALUMINUM CAP
- ◇ FOUND STONE
- SET 2 $\frac{1}{2}$ " ALUMINUM CAP
ON $\frac{5}{8}$ " X 24" REBAR STAMPED
IME PLS 5134.



Monument Inscription

Monument Location

Date of Field Work: 1/26/2011

Office Reference: Book: 1100 Page: 38 15265-RS (Pt. #214)
Office Reference: Book: 1104 Page: 51 15265-RS (Pt. #6706)

Cross Index Plat

	1	2	3	4	5	6	7	8	9	10	11	12	13	14	15	16	17	18	19	20	21	22	23	24	25		
A																											A
B																											B
C			6			5				4				3					2						1		C
D																											D
E																											E
F																											F
G																											G
H																											H
J																											J
K																											K
L																											L
M																											M
N																											N
O																											O
P																											P
Q																											Q
R																											R
S																											S
T																											T
U																											U
V																											V
W																											W
X																											X
Y																											Y
Z																											Z
	1	2	3	4	5	6	7	8	9	10	11	12	13	14	15	16	17	18	19	20	21	22	23	24	25		

Firm/Agency, Address

Inberg-Miller Engineers
124 East Main Street
Riverton, WY 82501

Telephone Number: 307-856-8136

This corner record was prepared by me or under my direction and supervision.

SEAL & SIGNATURE

Randall S. Stutz
4/15/11

RECORDED 4/19/2011 AT 8:27 AM REC# 567030 BK# 2216 PG# 910
DEBRA K. LATHROP, CLERK OF LARAMIE COUNTY, WY PAGE 1 OF 1

Corner Name N $\frac{1}{4}$ Corner Section 8, T 12 N, R 66 W, 6th P.M. Cross-Index No.: E-7
County: Laramie, Wyoming